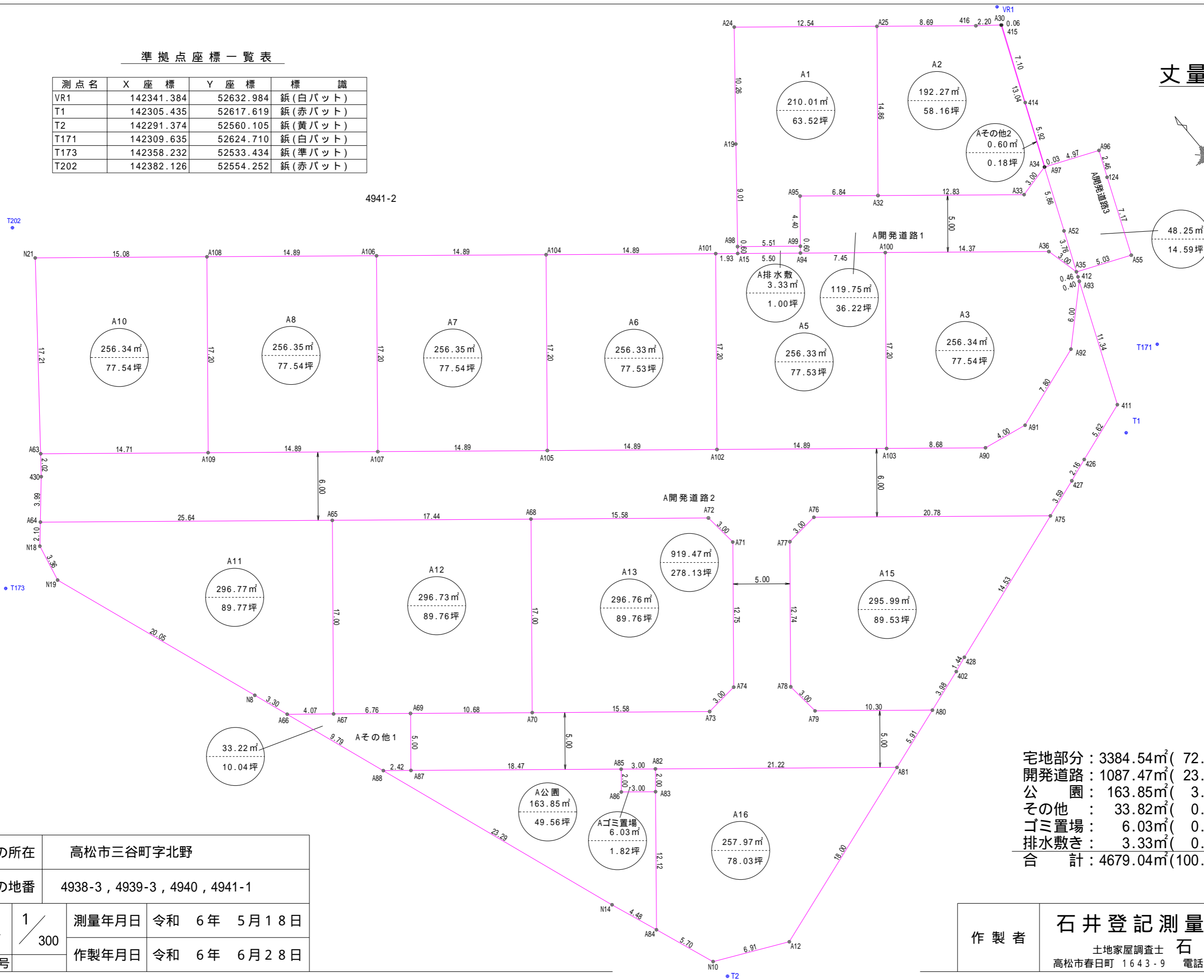


準拠点座標一覧表

測点名	X座標	Y座標	標識
VR1	142341.384	52632.984	鈺(白パット)
T1	142305.435	52617.619	鈺(赤パット)
T2	142291.374	52560.105	鈺(黄パット)
T171	142309.635	52624.710	鈺(白パット)
T173	142358.232	52533.434	鈺(準パット)
T202	142382.126	52554.252	鈺(赤パット)

丈量図



宅地部分	: 3384.54m ² (72.34%)
開発道路	: 1087.47m ² (23.24%)
公園	: 163.85m ² (3.50%)
その他	: 33.82m ² (0.72%)
ゴミ置場	: 6.03m ² (0.13%)
排水敷き	: 3.33m ² (0.07%)
合計	: 4679.04m ² (100.00%)

土地の所在	高松市三谷町字北野		
土地の地番	4938-3, 4939-3, 4940, 4941-1		
縮尺	1 / 300	測量年月日	令和 6年 5月 18日
		作製年月日	令和 6年 6月 28日
図面番号			

作製者	石井登記測量事務所
	土地家屋調査士 石井 敦雄
	高松市春日町 1643-9 電話 843-3131

座標求積表

Table with columns: 地番 A1, 測点, Xn, Yn, (Xn+1 - Xn-1)Yn. Rows include A24 to A25 with coordinates and area calculations.

Table with columns: 地番 A2, 測点, Xn, Yn, (Xn+1 - Xn-1)Yn. Rows include A25 to A46 with coordinates and area calculations.

Table with columns: 地番 A3, 測点, Xn, Yn, (Xn+1 - Xn-1)Yn. Rows include A36 to A35 with coordinates and area calculations.

Table with columns: 地番 A5, 測点, Xn, Yn, (Xn+1 - Xn-1)Yn. Rows include A100 to A103 with coordinates and area calculations.

Table with columns: 地番 A6, 測点, Xn, Yn, (Xn+1 - Xn-1)Yn. Rows include A101 to A102 with coordinates and area calculations.

Table with columns: 地番 A7, 測点, Xn, Yn, (Xn+1 - Xn-1)Yn. Rows include A104 to A105 with coordinates and area calculations.

Table with columns: 地番 A8, 測点, Xn, Yn, (Xn+1 - Xn-1)Yn. Rows include A106 to A107 with coordinates and area calculations.

Table with columns: 地番 A10, 測点, Xn, Yn, (Xn+1 - Xn-1)Yn. Rows include A108 to A109 with coordinates and area calculations.

Table with columns: 地番 A11, 測点, Xn, Yn, (Xn+1 - Xn-1)Yn. Rows include A65 to A67 with coordinates and area calculations.

Table with columns: 地番 A12, 測点, Xn, Yn, (Xn+1 - Xn-1)Yn. Rows include A68 to A70 with coordinates and area calculations.

Table with columns: 地番 A13, 測点, Xn, Yn, (Xn+1 - Xn-1)Yn. Rows include A71 to A74 with coordinates and area calculations.

Table with columns: 地番 A15, 測点, Xn, Yn, (Xn+1 - Xn-1)Yn. Rows include A75 to A78 with coordinates and area calculations.

Table with columns: 地番 A16, 測点, Xn, Yn, (Xn+1 - Xn-1)Yn. Rows include A81 to A12 with coordinates and area calculations.

Table with columns: 地番 A開発道路1, 測点, Xn, Yn, (Xn+1 - Xn-1)Yn. Rows include A34 to A52 with coordinates and area calculations.

Table with columns: 地番 A開発道路2, 測点, Xn, Yn, (Xn+1 - Xn-1)Yn. Rows include A93 to A411 with coordinates and area calculations.

Table with columns: 地番 A開発道路3, 測点, Xn, Yn, (Xn+1 - Xn-1)Yn. Rows include A96 to 124 with coordinates and area calculations.

Table with columns: 地番 A公園, 測点, Xn, Yn, (Xn+1 - Xn-1)Yn. Rows include A85 to A86 with coordinates and area calculations.

Table with columns: 地番 Aゴミ置場, 測点, Xn, Yn, (Xn+1 - Xn-1)Yn. Rows include A82 to A83 with coordinates and area calculations.

Table with columns: 地番 A排水敷, 測点, Xn, Yn, (Xn+1 - Xn-1)Yn. Rows include A99 to A94 with coordinates and area calculations.

Table with columns: 地番 Aその他1, 測点, Xn, Yn, (Xn+1 - Xn-1)Yn. Rows include A69 to A87 with coordinates and area calculations.

Table with columns: 地番 Aその他2, 測点, Xn, Yn, (Xn+1 - Xn-1)Yn. Rows include A34 to A30 with coordinates and area calculations.

合計 4679.04㎡

Form containing land location (高松市三谷町字北野), scale (縮尺), measurement date (令和 年 月 日), and creator information (石井登記測量事務所).